

# Clinical News Bulletin

Innovative Medical News

An AndraTec Publication

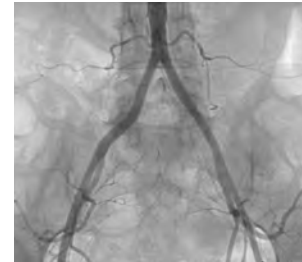
May 2014

## CROSS – OVER & INFRAINGUINAL USE OF THE LOKUM AMPLATZ GUIDE WIRE

References: Dipl. Med. B. Brehsan Dep. of Private Diagnostic and Interventional Radiology Centre Cologne

### Case Report:

A 66 year old male patient presented in our hospital with a limited walking distance of 100 m. A clinical stadium II b Fontaine was determined on the right leg. As risk factor of the Atherosclerosis a nicotine abuses was reported. Especially during his working time the Patient mentioned a significant reduction in his mobility.



No problems with the contra-lateral puncture of the a. femoralis communis. Under roadmap we were able to navigate a Terumo guide wire (Terumo Japan) cross over and navigate through the lesion. The angiographic picture shows an occlusion of the femoral artery on the right side. As well in the distal part we could see a 2 vessel run off in the lower limb.

We decided to exchange for a **Lokum Amplatz Guide Wire (AndraTec Germany)** to proceed with the treatment in order to gain better stability. A cross over sheath (Terumo) was put in place. An angioplasty with a 6mm x 6cm PTA balloon was performed, Opta-Pro (Cordis Johnson & Johnson, USA). The lesion was still present and showed a suboptimal result.

The control angiogram showed a short subintimal dissection and a residual stenosis of about 40%. A Nitinol Stent (Clear Stream, Ireland) size 6/60 was implanted and post dilated with a 6/60 PTA-catheter. Postangiographic control showed a good clinical result with a good run off. The dissection was fully covered by the Nitinol stent.

Clinically a strong pulse at the a. dorsalis pedis with undisturbed tri-phase velocity showed at the Doppler measurement. The walking distance was undisturbed. No complications at the puncture site were noted.

### Discussion:

Unsuufficient support with standard guide wires may increase the problematic of stability during cross-over procedures. Therefore we have decided to use stiff guide wires like the **Lokum Amplatz (AndraTec Germany)** at an early stage in order to save time and additional costs.



In the past 9 months our clinic has used the **Lokum Amplatz Guide Wire** frequently for cross-over procedures and for antegrade procedures where more support is needed.

### Conclusion:

It is to mention that the **Lokum Amplatz Guide Wire** gives you a sufficient support for most of the procedures. The visibility is excellent which is important when treating obese patients. The cost and time effectiveness is important for our institution. (Further Literature with the author).

© AndraTec International • May 2014

**Andratec**  
Advanced Interventional Technologies